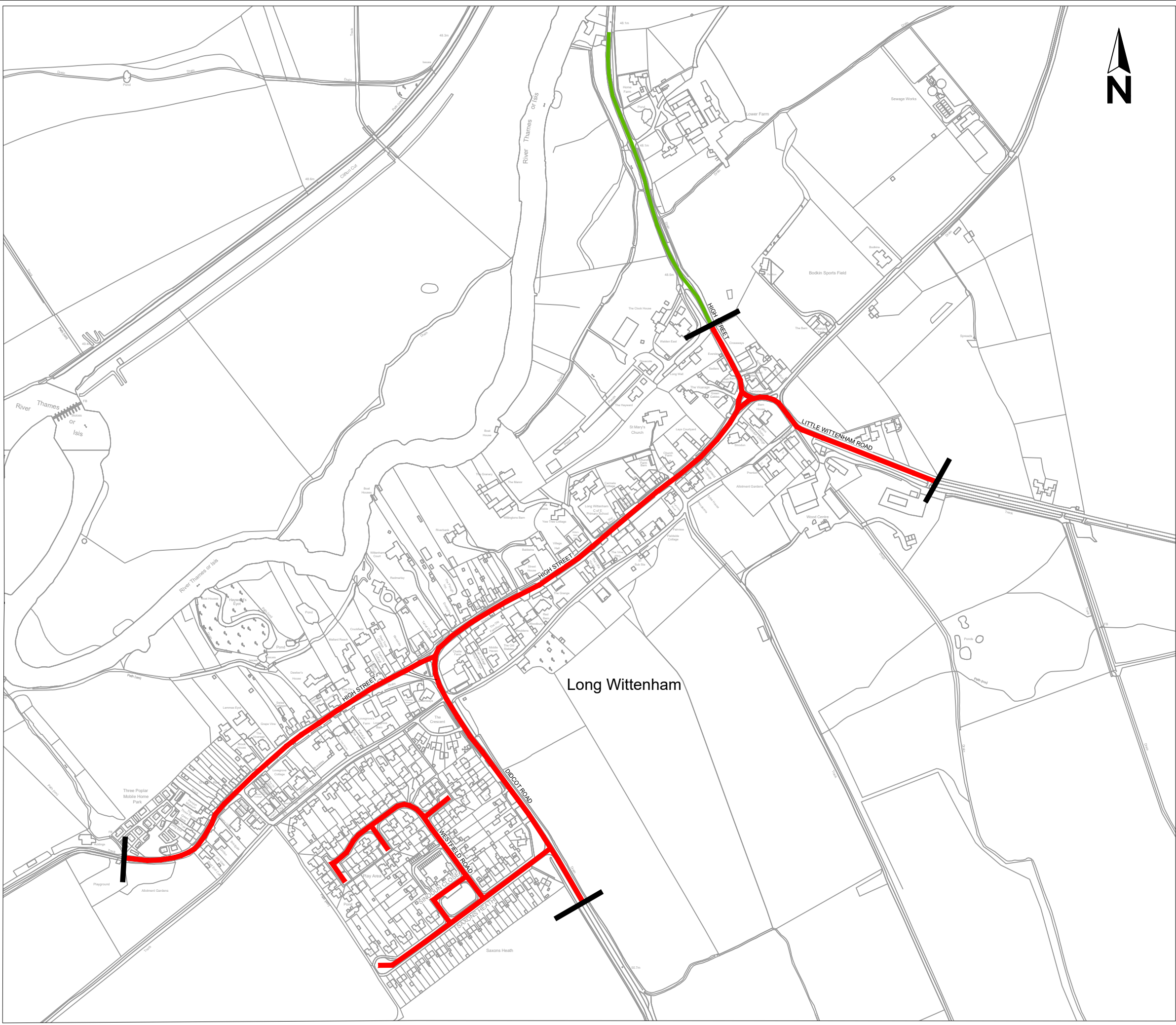


C:\Users\jane.clark\OneDrive - Oxfordshire County Council\TRO useful info\CAD plans\Long Wittenham 20mph.dwg



Drawing No.

Revision0

Key

Proposed 20mph speed limit in place of existing 30mph speed limit

Existing 30mph speed limit to remain

Reproduced from the Ordnance Survey mapping with the permission of the Controller of Her Majesty's Stationery Office © Crown Copyright. Unauthorised reproduction infringes Crown Copyright, and may lead to prosecution or civil proceedings. Oxfordshire County Council Licence No LA076805

Rev.	Date	Purpose of revision	Drawn	Checked	Approved

Bill Cotton

Corporate Director for Environment and Place Communities

Oxfordshire County Council

County Hall

Oxford

OX1 1ND

Tel: 0345 310 11 11

Fax: (01865) 241577

Project title

LONG WITTENHAM

Drawing title

PROPOSED 20MPH SPEED LIMIT

Drawing Status

Scale @ A3	Drawn by	Checked by	Approved by
N.T.S.	JaC		
	Date drawn08/21	Date checked	Date approved

Oxfordshire Project No. & File Ref

Drawing No.

Revision0